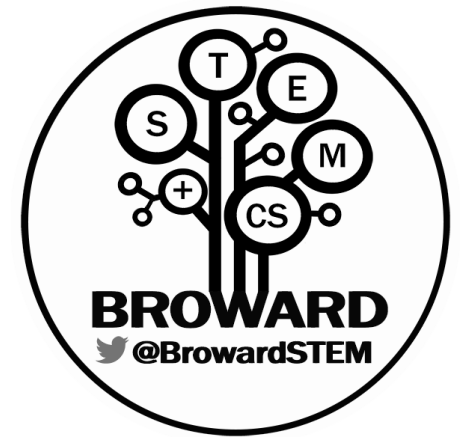


STEM+Computer Science

For every student in every school

NatureScape Partnership

- Promote greater environmental sustainability, including the protection and conservation of water resources, landscape and habitat improvements to SBBC facilities
- Partnership since 2017
- Actively engage the student population, teachers, and staff by instilling values associated with environmental stewardship and sustainability through classroom lessons, outdoor learning opportunities, training, and implementation of best management practices
- Assist with the annual P3 Eco-Challenge and the Youth Climate Summit
- Organize yearly Water Matters Day (environmental showcase and plant giveaway)

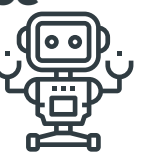


Hands-on problem-solving



Computer Science

Robotics



Engineering

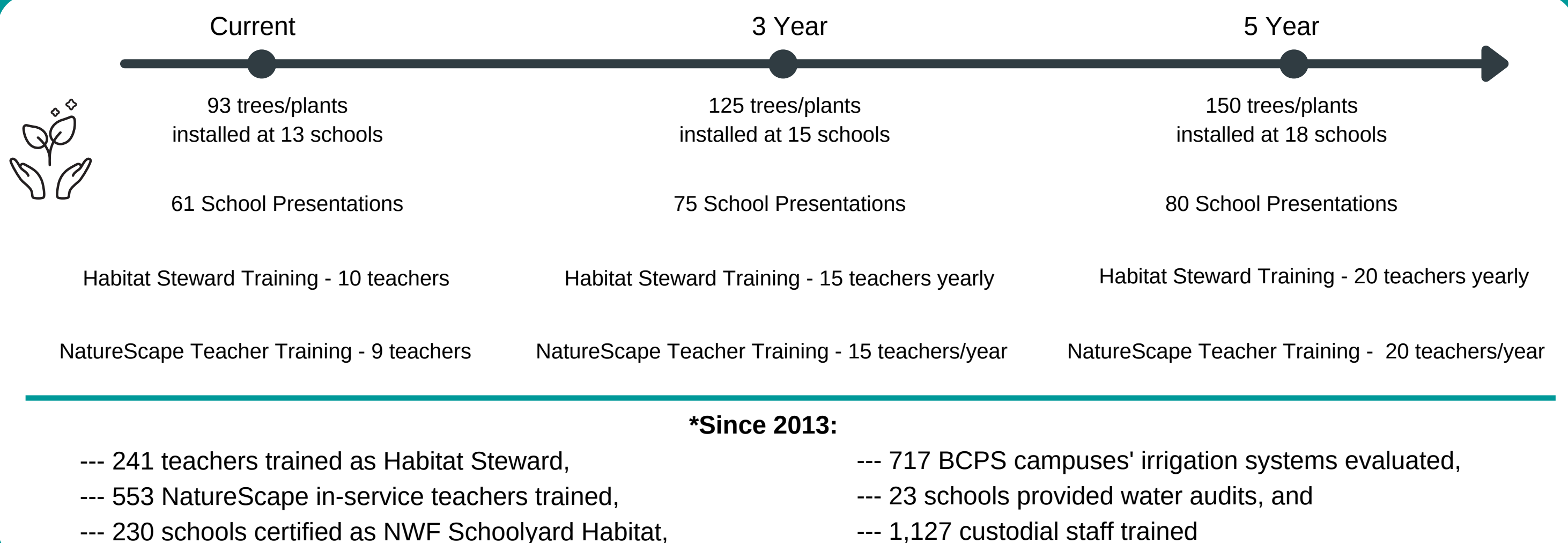
Environmental Stewardship



**Broward County Public Schools
Applied Learning Department**

Susan Cantrick, Director
Dr. Lisa Milenkovic, Supervisor, STEM+CS

browardschools.com/stem



The School Board of Broward County, Florida Lori Alhadeff • Torey Alston • Brenda Fam, Esq. • Daniel P. Foganholi • Debra Hixon • Dr. Jeff Holness
Sarah Leonardi • Nora Rupert • Dr. Allen Zeman • Dr. Peter B. Licata, Superintendent of Schools

The School Board of Broward County, Florida, prohibits any policy or procedure which results in discrimination on the basis of age, color, disability, gender identity, gender expression, genetic information, marital status, national origin, race, religion, sex or sexual orientation. The School Board also provides equal access to the Boy Scouts and other designated youth groups. Individuals who wish to file a discrimination and/or harassment complaint may call the Director, Equal Educational Opportunities/ADA Compliance Department & District's Equity Coordinator at 754-321-2150 or Teletype Machine (TTY) 754-321-2158. Individuals with disabilities requesting accommodations under the Americans with Disabilities Act Amendments Act of 2008, (ADAAA) may call Equal Educational Opportunities/ADA Compliance Department at 754-321-2150 or Teletype Machine (TTY) 754-321-2158. browardschools.com